

AN opportunity TO invest IN hope



SU QLD is a not-for-profit organisation focused on bringing hope to a young generation. We are the largest provider of school chaplains in Australia, with chaplains serving over **400,000 students** in more than **800 schools**. Our vision is to see each child and young person connected and supported in community, serving others, and experiencing fullness of life.

why WE ARE here



Stakeholders' rated SU QLD chaplains 4.5 on a 5 point scale for the following statement:

The chaplain provides effective one-on-one social and emotional support for students, parents/carers and staff.



Stakeholders' rated SU QLD chaplains 4.6 on a 5 point scale for the following statement:

The chaplain plays an important role supporting students, parents/carers and staff in times of crisis.

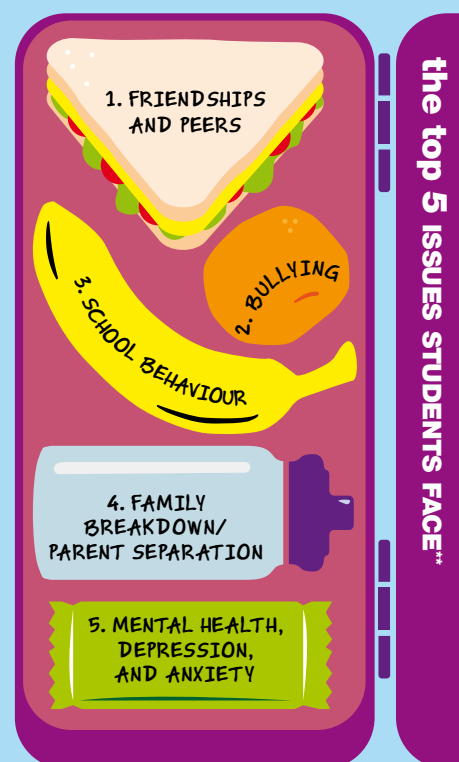


Stakeholders' rated SU QLD chaplains 4.6 on a 5 point scale for the following statement:

The chaplaincy service makes a unique contribution to our school.

'School chaplaincy 'stakeholders' refers to those asked to complete annual reviews for school chaplains. The 2551 respondents included Principals, teachers, SU QLD field staff, Local Chaplaincy Committee chairpersons, Local Chaplaincy Committee members, school student welfare staff, parents, P&C representatives and students. (Data from 2015 Chaplaincy Snapshot suqld.org.au/snapshot)

**School chaplains responded to the question, "What were the main issues for the students that you had 'formal' pastoral conversations with this week?" (Data from 2015 Chaplaincy Snapshot suqld.org.au/snapshot)



THE chaplaincy service AT



scripture union QUEENSLAND A member of the Scripture Union International community.
BRISBANE OFFICE Level 1, 126 Barry Pde, Fortitude Valley POSTAL PO Box 1167, Eagle Farm QLD 4009
T 1300 478 753 F 07 3112 6599 E info@suqld.org.au ACN 009 669 569 ABN 74 009 669 569 RTO 30548

suqld.org.au



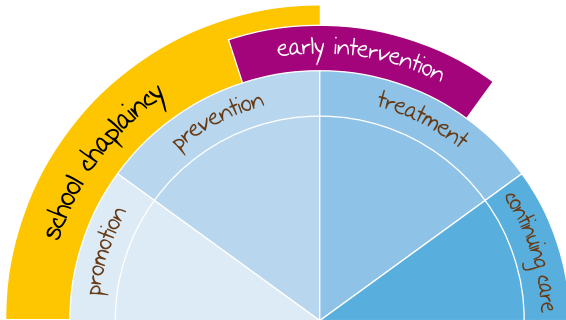
WHY YOU ARE AN important PART

Our work is made possible thanks in part to the Australian and Queensland Governments, but largely because of the support of generous Australians. Government funding employs a chaplain for less than two days a week.

You can support your local chaplain in a number of ways:

- Provide a special once off gift
- Provide a regular gift to help bring stability to the Chaplaincy Service
- Volunteer to assist in running programs at your chaplain's school e.g. breakfast club
- Join your Local Chaplaincy Committee (LCC) to help with a specific task e.g. secretary, treasurer, fundraising coordinator
- Volunteer to assist in events organised by the LCC e.g. an annual fundraising event

THE impact of your gift



SPECTRUM OF MENTAL HEALTH PROMOTION MODEL

School chaplains operate in the 'promotion, prevention and early intervention' space rather than the 'treatment and continuing care' space inhabited by many other helping professionals. They work in a support role, rather than in a counselling or case management role, referring complex issues onto other professionals and specialists.

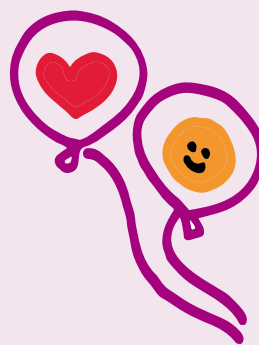


EACH YEAR CHAPLAINS SERVE OVER

150,000
STUDENT BREAKFASTS.

EACH YEAR, CHAPLAINS HAVE

700,000
PASTORAL CONVERSATIONS
WITH STUDENTS, FAMILIES
AND SCHOOL STAFF.



CHAPLAINS RUN MORE THAN

4,000
SOCIAL & EMOTIONAL
PROGRAMS TO TEACH RESILIENCE
& LIFE SKILLS EVERY YEAR.

CHAPLAINS **180**
RUN MORE THAN
GRIEF & LOSS SESSIONS
FOR HURTING
KIDS EACH YEAR.

